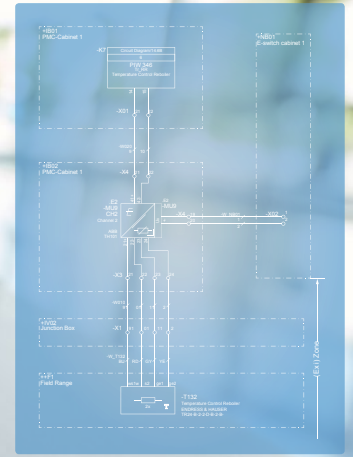
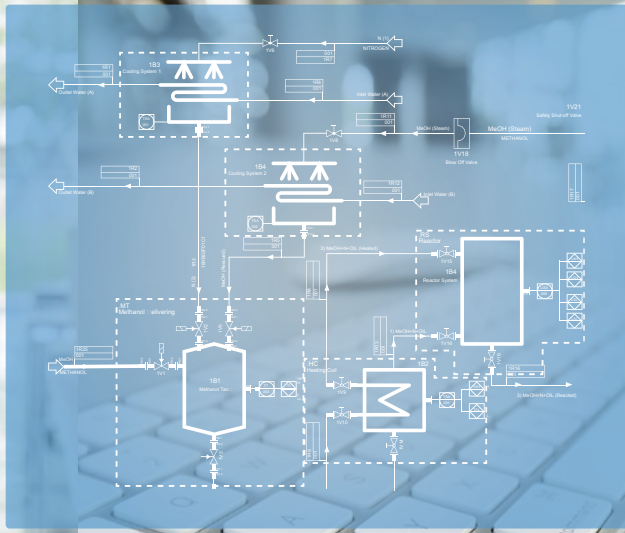


# Essentials

## Cooperative Plant Engineering



Engineering Base



## Modern plant engineering is parallel

Plant engineering is characterized by large-scale projects with a large number of highly sophisticated engineering and management tasks. All those involved are under considerable time pressure. Quality must not fall by the wayside. This is your everyday life!

### Fantastic and a reality: considerably reducing time pressure!

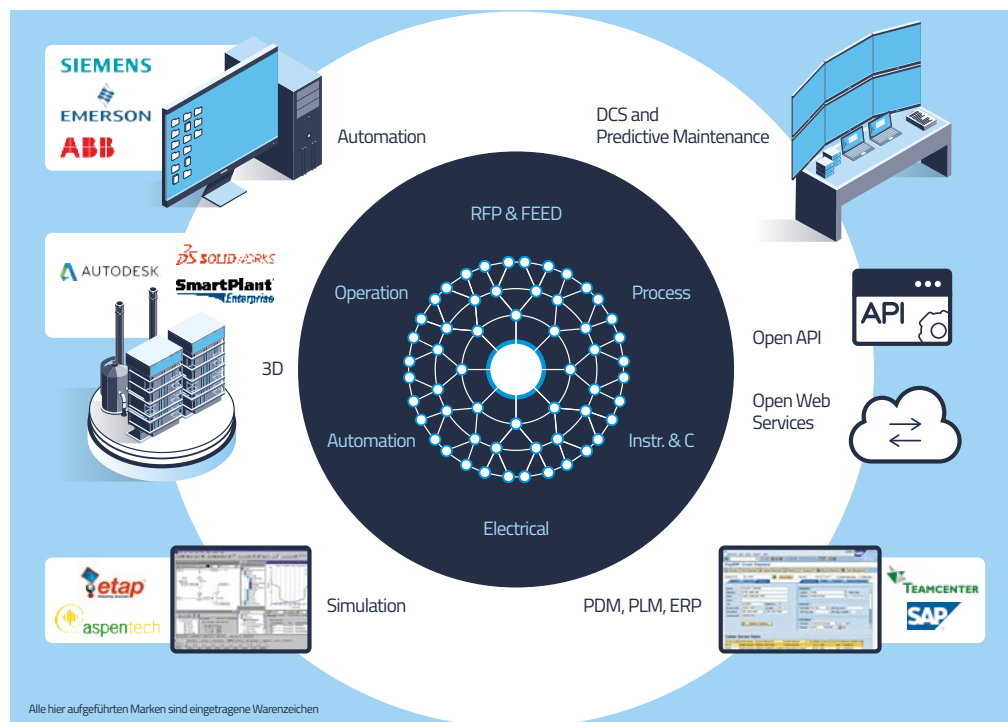
How fantastic would it be to handle these multiple tasks much faster? Without error-prone data transfers and collaborations? With consistent cooperation of all participating disciplines, despite global distribution, despite different time zones, competences, languages and engineering cultures? With a modern cloud concept, with any time access to current data? Sounds fantastic - and is already a reality: with Engineering Base!

### Versatile = parallel + integrated

Its versatile data model creates unique integration, parallelism of editing and consistency for all core disciplines from FEED to process and detail engineering, plus retrofitting and maintenance. Conventional tool chains, in contrast, are not getting any shorter because of interfaces and synchronization platforms.

### Cooperative by nature

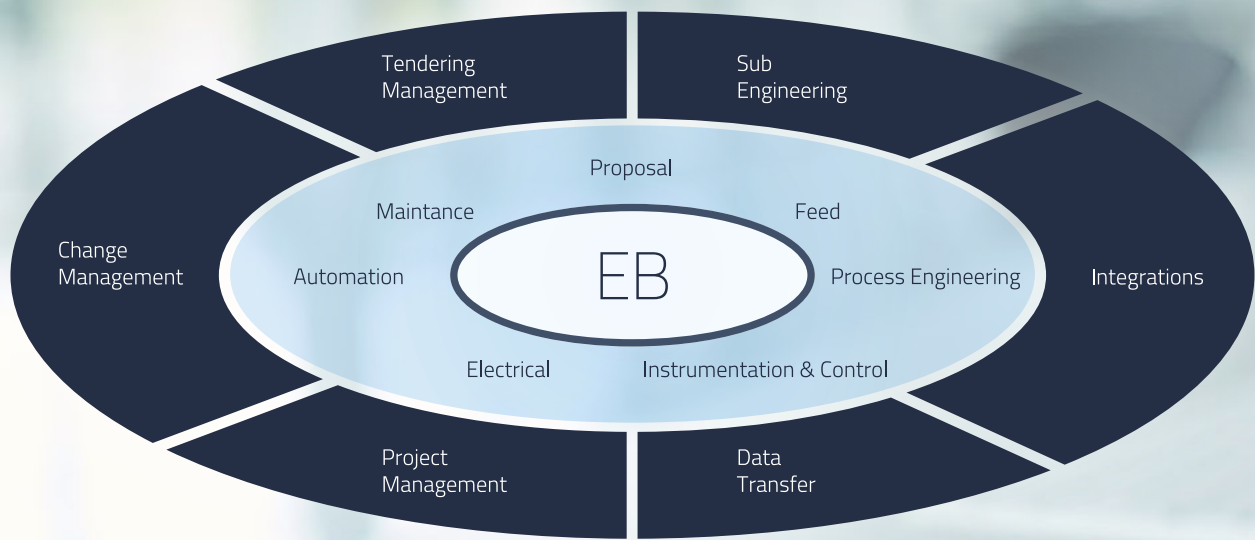
The principle of parallel, even simultaneous working of all core disciplines on the same plant model ends the time-consuming as well as outmoded "relaying" of information. All data once developed can be used directly by all concerned, regardless of location, time or language. Only in this way does cooperation become efficient!











## Unique spectrum: fully integrated

### Basic Engineering (FEED included)

The versatile data model creates seamless continuity in plant design: it starts with the first overview flow diagram. The FEED function imports the results from simulations of Aspen and similar tools. Immediately PFDs and worksheets apply the results of the calculations. From the rough flow chart to the material balance, Engineering Base then automatically displays all the consequences of each desired scenario - each in a separate document.

### Process Engineering

In the process design, numerous user-friendly functions facilitate the development of the P&ID, for example through modular design. Lists and reports are created automatically. Added to this are pipe-class-related workflow and rule-based design. If FEED was used in basic engineering, the process design must "only" supplement its specifications in the scenario that was selected and commissioned.

### Detail Engineering

Instrumentation, circuit diagram creation, wiring, terminal assignment, cabinet design, I/O specifications, in short: the entire infrastructure of everything that makes a plant functional

has been a core competence of AUCOTEC for over 30 years. In addition, the control system configuration is considerably accelerated: with automated transfer of the engineering data to the programming of every common control system, even in parallel to different systems.

### Cause & Effect

Before commissioning, a plant will be put through its paces with Cause & Effect documents. This phase benefits once again especially from the uniform data model. Engineering Base draws all necessary logic specifications from each individual discipline and automatically creates the report matrix. This ensures unprecedented consistency and saves both important engineering capacity and a lot of time.

### Plant Operation

With the support of plant operation, the platform rounds off its integration principle. On the one hand it offers web-based maintenance functions with more mobility and quality, on the other hand a special management of execution measures for larger conversion and expansion projects. This ensures the orderly and exceptionally consistent return of the new data into the updated as-built project.

## Pure synergy!

This unique spectrum redefines your daily engineering life. Much faster project turnaround times, fewer mistakes and agreements, no unnecessary crosschecks and synchronization. All core disciplines united in a versatile data model in only one database. Your new everyday life: pure synergy!

### **Worldwide support**

Because there are no limits to the application of our products, AUCOTEC is represented all over the world. Many of our customers are firms operating on a global scale.

Our global network is at your service around the clock, and in all languages - right from the word go.

**Seize the opportunity and seize the lead – worldwide!**

AUCOTEC AG  
Oldenburger Allee 24  
30659 Hannover  
Germany

[telefon | phone](#)  
+49 511 61 03-0  
[e-mail](#)  
[info@aucotec.com](mailto:info@aucotec.com)