



Solutions for Environmental Testing

Soil Application — In Accordance with US EPA 3545A or US EPA 3546



EDGE and MARS 6

Pressurized Fluid Extraction

Microwave Solvent Extraction



Options to fit your needs.

EDGE[®]



Sequential

Mixed Sample Types

No Solvent Limitations

Filtered Samples

Extraction Only

Great For One-Off Difficult Samples

MARS 6[™]



Batch

Like Sample Types

Solvent Must Have Dipole Moment

Samples Must be Manually Filtered

Extraction and Digestion in One System

Great For High Throughput

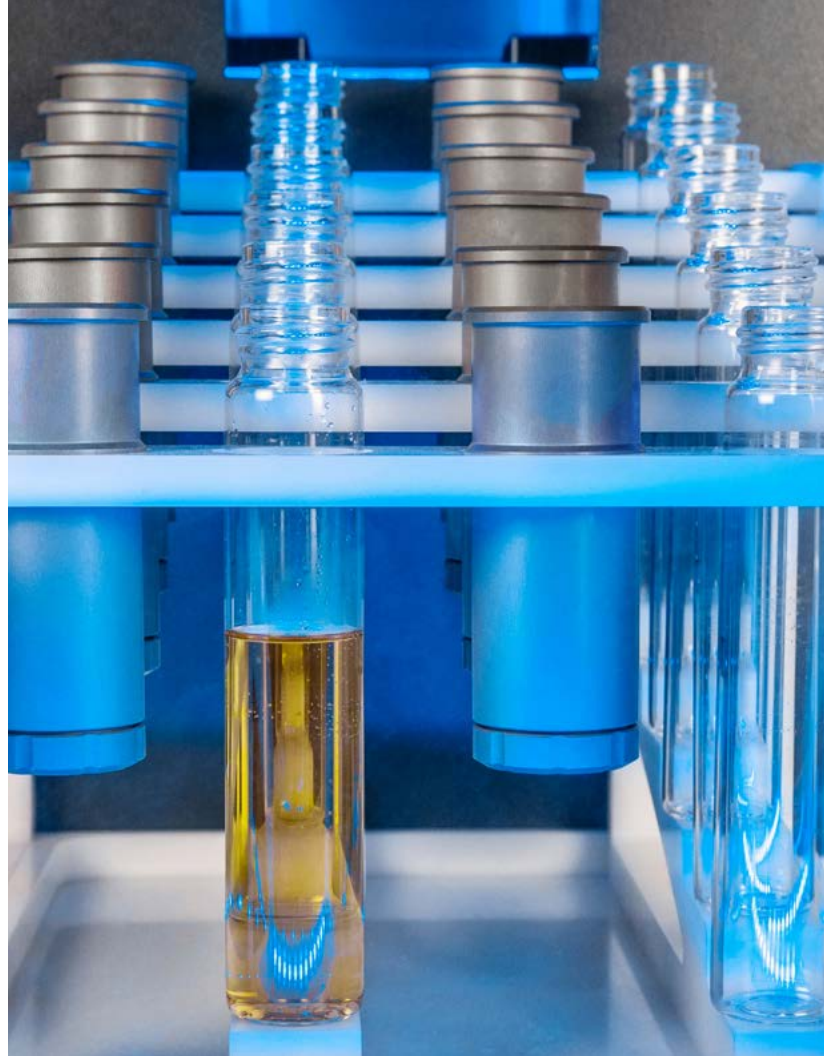


EDGE

Automated Solvent Extraction System

The EDGE is a sequential automated pressurized fluid extraction system that is faster than Soxhlet and simpler than other automated extraction systems. With the Q-Cup® Sample Holder, it is perfect for efficiently preparing samples for US EPA 3545A. The EDGE automates the extraction and washing process and provides a filtered and cooled extract.

Sample Holder
Q-Cup





MARS 6

Microwave Extraction System

The MARS 6 is a batch microwave extraction system with an intelligent design that's remarkably easy to use. With an industry leading 2000 watts of installed power, it is the perfect tool for preparing samples for US EPA 3546. The MARS 6 can easily prepare up to 40 samples in a single batch, or up to 24 samples using disposable glass inserts, providing the highest throughput of any microwave extraction system on the market.

Vessels

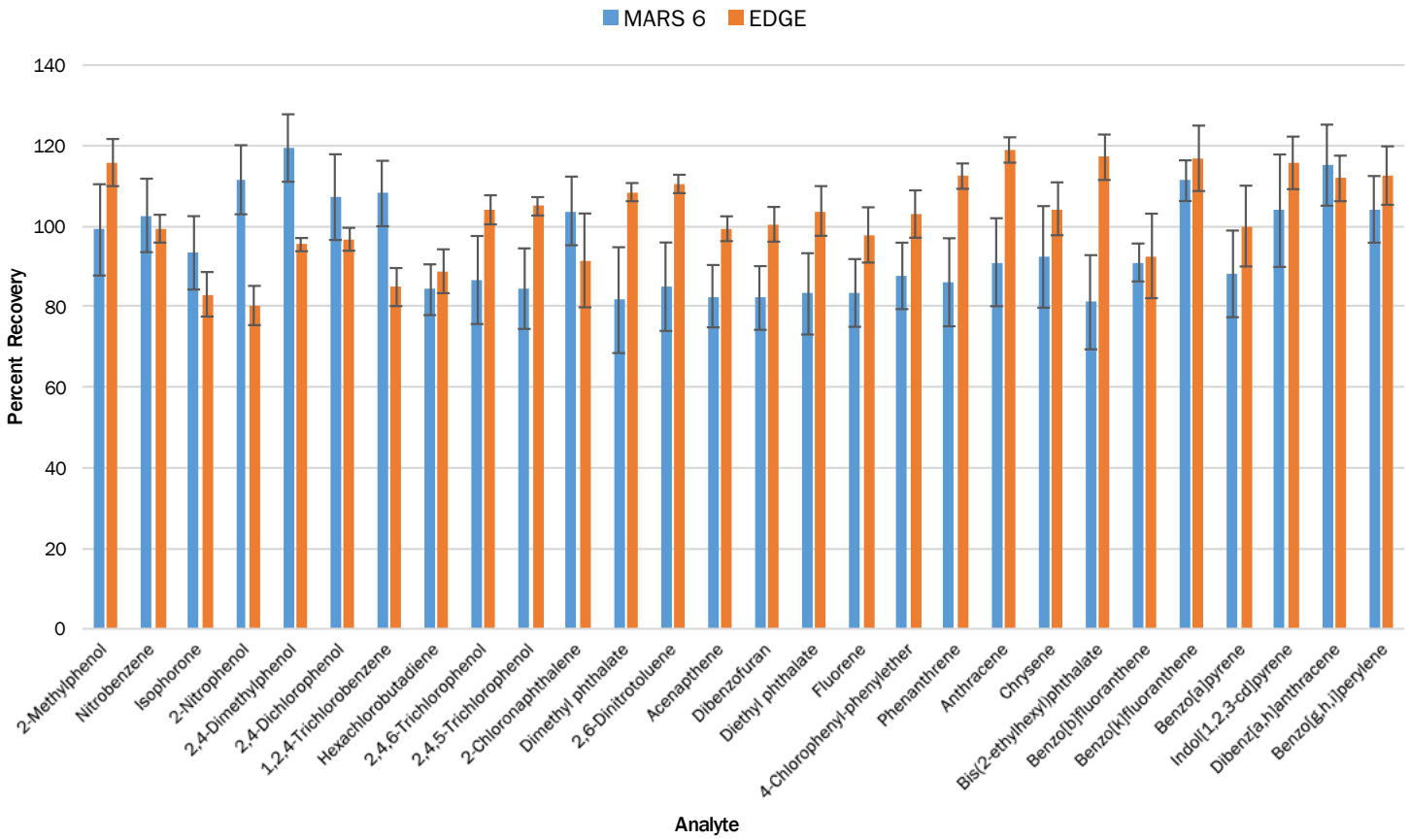
MARSXpress Plus



Results

Both the EDGE and the MARS 6 extracted 20 g of a BNA CRM. Acceptable recoveries and RSD values were obtained.

MARS 6 and EDGE CRM Recovery







We Simplify Science

cem.com



Over 100,000 systems sold worldwide



CEM Corporation ISO 9001:2015 certified since 1994



All systems serviced & supported by experts with an average of 15 years of experience



CEM invests 12% of annual revenue into R&D, the result... 11 R&D 100 awards



IQ/OQ/PQ Validation by certified CEM Technicians

United States (Headquarters)

800-726-3331
704-821-7015
info@cem.com

France

33 (01) 69 35 57 80
info.fr@cem.com

Germany, Austria, Switzerland

(49) 2842-9644-0
info@cem.de

Ireland

+353 (0) 1 885 1752
info.ireland@cem.com

Italy

(+39)035896224
info.srl@cem.com

Japan

+81-3-5793-8542
info@cemjapan.co.jp

United Kingdom

(44) 1280-822873
info.uk@cem.com

For distributors in other regions, visit cem.com/contact